

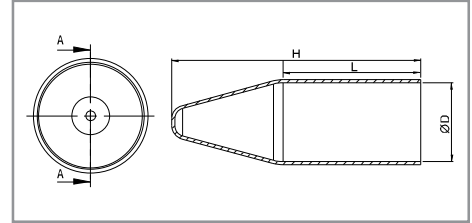
SHROUDS >>>>>>



SHROUD

TECHNICAL DETAILS

Type : PS / SHROUDS
Material : PVC / LSF



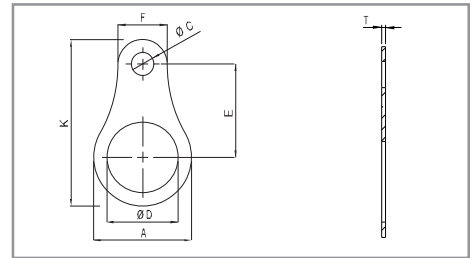
EARTHING PARTS >>>>>>



EARTH TAG

TECHNICAL DETAILS

Type : RTE / EARTH TAG
Material : MS 64 with Nickel Plated Stainless Steel



SHROUD

Product Size	Product Code	Ø D mm	H mm	L mm
M16-M20ss-M20s	PS-16	25	100	60
M20	PS-20	31	110	65
M25	PS-25	41	130	70
M32	PS-32	49	145	80
M40	PS-40	59	165	85
M50s	PS-50s	64	150	85
M50	PS-50	75	170	90
M63s	PS-63s	81	175	90
M63	PS-63	86	175	90
M75s	PS-75s	98	210	115
M75	PS-75	108	220	115
M90	PS-90	-	-	-

EARTH TAG

Product Size	Product Code	Product Brass Code	A	ØD	ØC	F	K	E	T
M16	RTEN-16	RTEB-16	25,4	16,5	6,5	12,5	49	30	1
M20	RTEN-20	RTEB-20	27	20,5	6,5	10,2	52	33	1
M25	RTEN-25	RTEB-25	35	25,5	6,5	13,5	60	35,5	1
M32	RTEN-32	RTEB-32	45	32,5	10,5	22,5	77	43	1
M40	RTEN-40	RTEB-40	53,5	40,5	12,5	23,6	83,5	45	1
M50	RTEN-50	RTEB-50	65	50,5	12,5	29,5	105	58	1
M63	RTEN-63	RTEB-63	82	63,5	12,5	29,5	123	67	1
M75	RTEN-75	RTEB-75	96	75,5	12,5	24	133	73	1,5
M90	RTEN-90	RTEB-90	114	90,5	12,5	37	161,5	86	1,5
M100	RTEN-100	RTEB-100	125	100,5	12,5	40	192,5	110	2

PRODUCT RANGE OVERVIEW

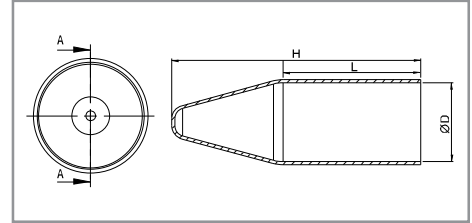
SHROUDS >>>>>>



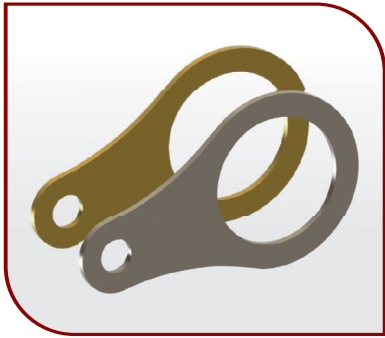
SHROUD

TECHNICAL DETAILS

Type : PS / SHROUDS
Material : PVC / LSF



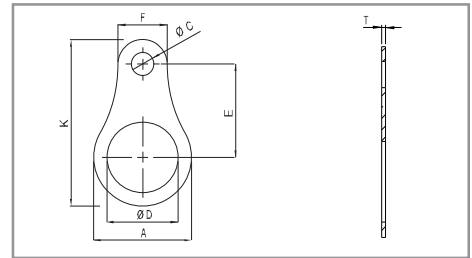
EARTHING PARTS >>>>>>



EARTH TAG

TECHNICAL DETAILS

Type : RTE / EARTH TAG
Material : MS 64 with Nickel Plated Stainless Steel



SHROUD

Product Size	Product Code	Ø D mm	H mm	L mm
M16-M20ss-M20s	PS-16	25	100	60
M20	PS-20	31	110	65
M25	PS-25	41	130	70
M32	PS-32	49	145	80
M40	PS-40	59	165	85
M50s	PS-50s	64	150	85
M50	PS-50	75	170	90
M63s	PS-63s	81	175	90
M63	PS-63	86	175	90
M75s	PS-75s	98	210	115
M75	PS-75	108	220	115
M90	PS-90	-	-	-

EARTH TAG

Product Size	Product Code	Product Brass Code	A	ØD	ØC	F	K	E	T
M16	RTEN-16	RTEB-16	25,4	16,5	6,5	12,5	49	30	1
M20	RTEN-20	RTEB-20	27	20,5	6,5	10,2	52	33	1
M25	RTEN-25	RTEB-25	35	25,5	6,5	13,5	60	35,5	1
M32	RTEN-32	RTEB-32	45	32,5	10,5	22,5	77	43	1
M40	RTEN-40	RTEB-40	53,5	40,5	12,5	23,6	83,5	45	1
M50	RTEN-50	RTEB-50	65	50,5	12,5	29,5	105	58	1
M63	RTEN-63	RTEB-63	82	63,5	12,5	29,5	123	67	1
M75	RTEN-75	RTEB-75	96	75,5	12,5	24	133	73	1,5
M90	RTEN-90	RTEB-90	114	90,5	12,5	37	161,5	86	1,5
M100	RTEN-100	RTEB-100	125	100,5	12,5	40	192,5	110	2

PRODUCT RANGE OVERVIEW